

# SLAB NOTES

## NOTES: (FOR FLAT TOP SLAB / TILE FLOOR INSTALLATION)

### CONCRETE:

- ALL SLAB CONCRETE TO BE 4,000 PSI AT 28 DAYS (CONCRETE STRENGTH REQUIREMENT). A HIGH EARLY MIX MAY BE UTILIZED ONLY IF THE MIX DESIGN IS APPROVED BY THE ENGINEER.
- CEMENT SHALL CONFORM TO ASTM C 150, TYPE II.
- FINE AGGREGATE SHALL CONFORM TO ASTM C 33.
- COARSE AGGREGATE SHALL BE GRAVEL OR CRUSHED STONE CONFORMING TO ASTM C 33. COARSE AGGREGATE FOR FLOOR SLAB SHALL NOT EXCEED 1-1/2" AT ITS MAXIMUM WIDTH.
- WATER SHALL BE CLEAN AND FREE FROM INJURIOUS AMOUNTS OF OILS, ACIDS, ALKALIES, ORGANIC MATERIALS OR DELETERIOUS SUBSTANCES.
- AIR ENTRAINING ADMIXTURE SHALL CONFORM TO ASTM C 260.
- CALCIUM CHLORIDE ADMIXTURES, THIOCYANATE ADMIXTURES OR ANY ADMIXTURES CONTAINING MORE THAN 0.5% CHLORIDE IONS ARE NOT PERMITTED.
- REINFORCING STEEL AND CONCRETE TO BE PLACED IN ACCORDANCE WITH ACI 318 LATEST EDITION.
- THE ALLOWABLE CONCRETE SLUMP SHALL BE 3" PLUS OR MINUS 1/2" UNLESS SUPERPLASTICIZERS ARE USED. THE ENGINEER SHALL APPROVE SUPERPLASTICIZER USE.
- AS REQUIRED BY OWNER, SLUMP TEST SHALL BE MADE IN ACCORDANCE WITH ASTM C 143.
- NO CONCRETE SHALL BE PLACED WHEN THE ATMOSPHERIC TEMPERATURE IS BELOW 40° F WITHOUT PERMISSION OF THE ENGINEER.
- THE ENGINEER OR THE OWNER MAY ACCEPT OR REJECT ANY WORK THAT DOES NOT MEET THE REQUIREMENTS OF THESE NOTES OR THE PROJECT DRAWINGS.
- AS REQUIRED BY OWNER, CONTRACTOR SHALL MAKE ARRANGEMENTS FOR TESTING THE SLUMP, AIR CONTENT, AND CONCRETE CYLINDERS.
- AS REQUIRED BY OWNER, COMPRESSIVE STRENGTH OF THE CONCRETE CYLINDERS SHALL BE TESTED AT 3 DAYS, 7 DAYS AND 28 DAYS. APPROPRIATE NUMBER OF CYLINDERS SHALL BE COLLECTED TO PERFORM THE TESTING. CYLINDERS SHALL BE TESTED IN ACCORDANCE WITH ASTM C 39.
- SLAB TO BE POURED IN EITHER 20 FT X 20 FT SECTIONS (MAX) OR PROVIDE 1/2" SAW CUT CONTRACTION JOINTS AT 20 FT MAXIMUM SPACING. SAW CUT JOINTS TO BE MADE AS SOON AS THE CONCRETE HAS CURED SUFFICIENTLY TO ALLOW THE WORK WITHOUT DAMAGING THE CONCRETE.
- CONFIRM ANCHOR PLACEMENT PRIOR TO CUTTING JOINTS. ENSURE 3" CLEARANCE BETWEEN ANCHOR CENTERS AND JOINT AND CUT JOINTS AS SHOWN ON PLAN VIEW.
- PROVIDE 4" TO 6" OF CRUSHER RUN GRAVEL AS SHOWN IN SECTION DETAIL.
- SOIL TO BE COMPACTED TO MEET THE REQUIREMENTS OF 95% MODIFIED PROCTOR.

### REINFORCEMENT

- INSTALL SLAB REINFORCING 6 X 6 X 6/6 WELDED WIRE MESH (WWM) PLACED IN THE CENTER OF THE SLAB TO EXTEND THROUGH ENTIRE SLAB. UTILIZE SUFFICIENT NUMBER OF CHAIRS TO MAINTAIN WWM POSITION.
- INSTALL ADDITIONAL / UPGRADED REINFORCEMENT AS REQUIRED BY LOCAL CODE.
- REINFORCING TO BE NEW BILLET STEEL MEETING THE REQUIREMENTS OF ASTM A615 GRADE 60.
- PROVIDE VAPOR BARRIER BELOW THE SLAB AS REQUIRED BY LOCAL CODE AND CONDITIONS.

### CONCRETE FINISHING NOTES:

- THE FINISHED CONCRETE SURFACE SHOULD BE SLOPED AWAY FROM THE WALL. THE SURFACE SLOPE SHOULD BE 1/8" PER 12".
- THE FINISHED CONCRETE SURFACE SHOULD BE SMOOTH TO PREVENT IRREGULARITIES, ROUGHNESS, OR OTHER DEFECTS THAT WOULD AFFECT THE FINISHED FLOOR SURFACE. THE SURFACE SHOULD BE FLAT TO THE EQUIVALENT OF 3/16" OVER 10'.
- THE FINISHED CONCRETE SURFACE SHOULD HAVE A LIGHT BROOM FINISH TO PROVIDE THE BEST SURFACE FOR COURT SURFACE ADHESION.
- IMPORTANT: FLOORING INSTALLATIONS REQUIRE A **28 DAY CURE TIME** AFTER CONCRETE PLACEMENT. FLOORING INSTALLATIONS CAN BE ACCELERATED WITH AN APPLICATION OF "SPRAYLOCK" PRODUCT. SCP 327 OR EQUIVALENT IS REQUIRED. THE SPRAYLOCK PRODUCT WILL ALLOW FLOORING INSTALLATION AS SOON AS 14 DAYS AFTER CONCRETE PLACEMENT AND SPRAYLOCK APPLICATION. CONFIRM PRODUCT SELECTION WITH THE MANUFACTURER. APPLY SPRAYLOCK PRODUCT THE DAY OF THE CONCRETE PLACEMENT PER MANUFACTURER'S INSTRUCTIONS.

### ANCHOR NOTES:

- FIELD VERIFY ALL ANCHOR LOCATION DIMENSIONS AND PATTERNS PRIOR TO DRILLING. SEE FITNESS COURT INSTALLATION INSTRUCTIONS FOR ANCHOR LOCATIONS.
- DRILL THROUGH TILE FLOOR (1" TILE THICKNESS) WHERE NECESSARY WITH APPROPRIATE DRILL BIT TO MATCH ANCHOR HOLE IN CONCRETE.
- SEE ANCHOR DETAILS FOR APPLICABLE CONCRETE EMBEDMENT DEPTH AND HOLE DIAMETER.
- STAINLESS STEEL MUST BE USED WHERE SPECIFIED.
- COMPONENTS SPECIFIED AS HOT-DIP GALVANIZED MAY BE SUBSTITUTED WITH 304 SS COMPONENTS.
- WHEN INSTALLING ANCHORS, TAKE CARE TO USE THREAD PROTECTORS TO PREVENT THREAD DAMAGE.

### GENERAL

- SITE PREPARATION REQUIREMENTS AND CONCRETE SLAB DESIGN SHOULD BE REVIEWED BY LOCAL CIVIL OR SOILS ENGINEER TO CONFIRM SUITABILITY BASED UPON SITE SPECIFIC NEEDS AND CONDITIONS.

THIS DOCUMENT IS PROPERTY OF NFC (THE NATIONAL FITNESS CAMPAIGN). THIS DOCUMENT CONTAINS CONFIDENTIAL AND PROPRIETARY INFORMATION AND MAY ONLY BE USED BY PERMISSION FROM NFC AND FOR THE PURPOSES AUTHORIZED BY NFC. DISCLOSURE, DUPLICATION, MODIFICATION, OR OTHER USE OF THIS DOCUMENT IS NOT PERMITTED WITHOUT THE PRIOR WRITTEN PERMISSION OF NFC.

ANCHOR BILL OF MATERIAL			
ITEM	QTY	DESCRIPTION	NOTES
ANCHOR A	30	WALL ANCHOR	SEE ANCHOR DETAILS
ANCHOR B	28	DROP-IN ANCHOR	SEE ANCHOR DETAILS
ANCHOR C	48	MECHANICAL ANCHOR	SEE ANCHOR DETAILS
ANCHOR EPOXY	AS REQ'D	HILTI HIT-HY 200 FOR WALL ANCHORS (SEE ANCHOR DETAILS RE: ALTERNATE EPOXY)	SEE ANCHOR DETAILS

## INSTALLATION SEQUENCE

### (FOR FLAT TOP SLAB / TILE FLOOR INSTALLATION)

- REVIEW ALL DRAWINGS INCLUDING ALL NOTES TO BECOME FAMILIAR WITH SEQUENCE AND DETAILS.
- DURING INSTALLATION SEQUENCE, REFER TO AND COMPLY WITH APPLICABLE NOTES.
- PREPARE AREA BELOW SLAB WITH COMPACTED SOIL AND GRAVEL PER PREP SECTION DETAIL VIEW ON REINFORCEMENT / PREP DETAIL DRAWING.
- BUILD FORMS FOR OUTER PERIMETER OF THE SLAB WITH DIMENSIONS PER SLAB PLAN AND SELECTED WIDTH OF OUTER BAND AROUND FITNESS COURT AREA.
- INSTALL REINFORCEMENT STEEL PER THE REINFORCEMENT /PREP DETAIL DRAWING.
- PLACE SPECIFIED CONCRETE PER THICKNESS SHOWN IN SECTION A-A OF CONCRETE SLAB PLAN & CROSS-SECTION DRAWING.
- FINISH CONCRETE TO THE SLOPE SPECIFIED FOR DRAINAGE.
- TILE FLOOR SHOULD BE INSTALLED PRIOR TO INSTALLING ANCHORS IN THE TILE FLOOR AREA.
- PLACE ANCHORS PER WALL ANCHOR LOCATIONS DRAWING AND FLOOR ANCHOR LOCATIONS DRAWING AS SHOWN IN THE FITNESS COURT INSTALLATION INSTRUCTIONS. ANCHOR LOCATION DIMENSIONS ARE ORDINATE DIMENSIONS MEASURED FROM THE UPPER LEFT CORNER OF THE TILE FLOOR. CONFIRM CORRECT DIMENSIONS ARE USED FOR PLACING ANCHORS.
- REFER TO ANCHOR DETAILS FOR TILE DRAWING FOR ANCHOR DRILLING DIAMETER AND DEPTH.
- NOTE: WHEN DRILLING HOLES FOR ANCHORS, MAKE SURE THE HAMMER DRILL IS VERTICAL.**
- DRILL HOLES IN TILE AND IN CONCRETE FOR ANCHORS USING THE METHOD(S) AS OUTLINED IN THE FITNESS COURT INSTALLATION INSTRUCTIONS FOR HOLE PLACEMENT.
- NOTE: PLYOBOX AND BEND STATION TEMPLATES WILL REQUIRE **REUSE** TO LOCATE ALL ANCHORS. REFER TO TEMPLATE NOTES IN THE FITNESS COURT INSTALLATION INSTRUCTIONS FOR DETAILS OF SUPPLIED TEMPLATES.
- INSTALL EPOXY ANCHORS TO THE DEPTH INDICATED UTILIZING THE SPECIFIED EPOXY AND THE MANUFACTURER'S EPOXY INSTALLATION INSTRUCTIONS.
- INSTALL MECHANICAL ANCHORS TO THE DEPTH INDICATED. **BE CAREFUL TO AVOID INSTALLING ANCHORS TOO DEEP FOR THE BEND STATIONS.**



**NATIONAL FITNESS CAMPAIGN**  
SAN FRANCISCO, CA

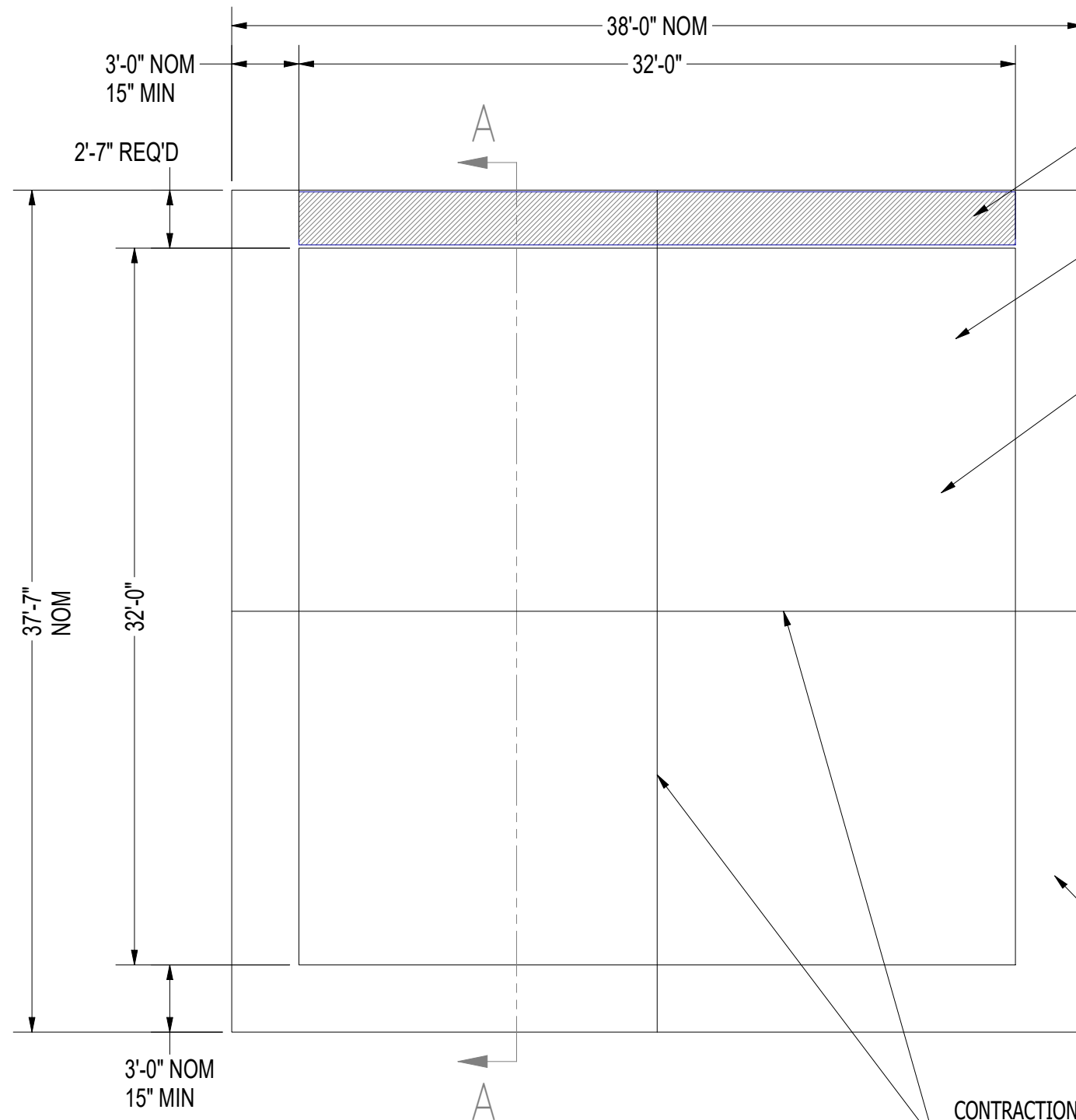
DATE: 3/9/2022

BY: MAXIMUS INNOVATIONS

NAME: TILE SLAB  
REV: 7.2 PAGE 1/4

# CONCRETE SLAB PLAN & CROSS-SECTION

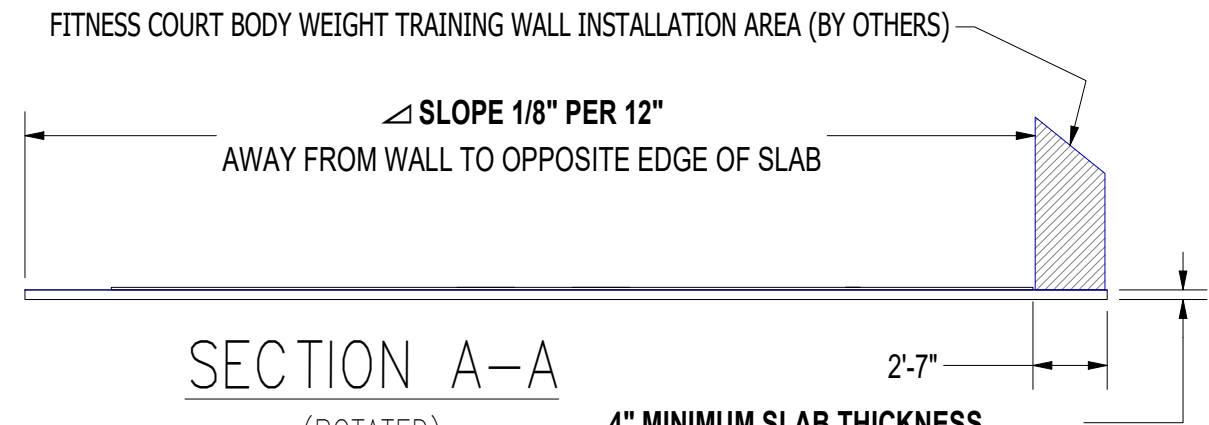
(FOR FLAT TOP SLAB / TILE FLOOR INSTALLATION)



FITNESS COURT BODY WEIGHT TRAINING WALL INSTALLATION AREA (BY OTHERS).

FITNESS COURT TILED EXERCISE FLOOR AREA (BY OTHERS).

THE FINISHED CONCRETE SURFACE SHOULD BE SMOOTH TO PREVENT IRREGULARITIES, ROUGHNESS, OR OTHER DEFECTS THAT WOULD AFFECT THE FINISHED FLOOR SURFACE. THE SURFACE SHOULD BE FLAT TO THE EQUIVALENT OF 3/16" OVER 10'. THE FINISHED CONCRETE SURFACE SHOULD HAVE A LIGHT BROOM FINISH TO PROVIDE THE BEST SURFACE FOR COURT SURFACE ADHESION.



SECTION A-A  
(ROTATED)

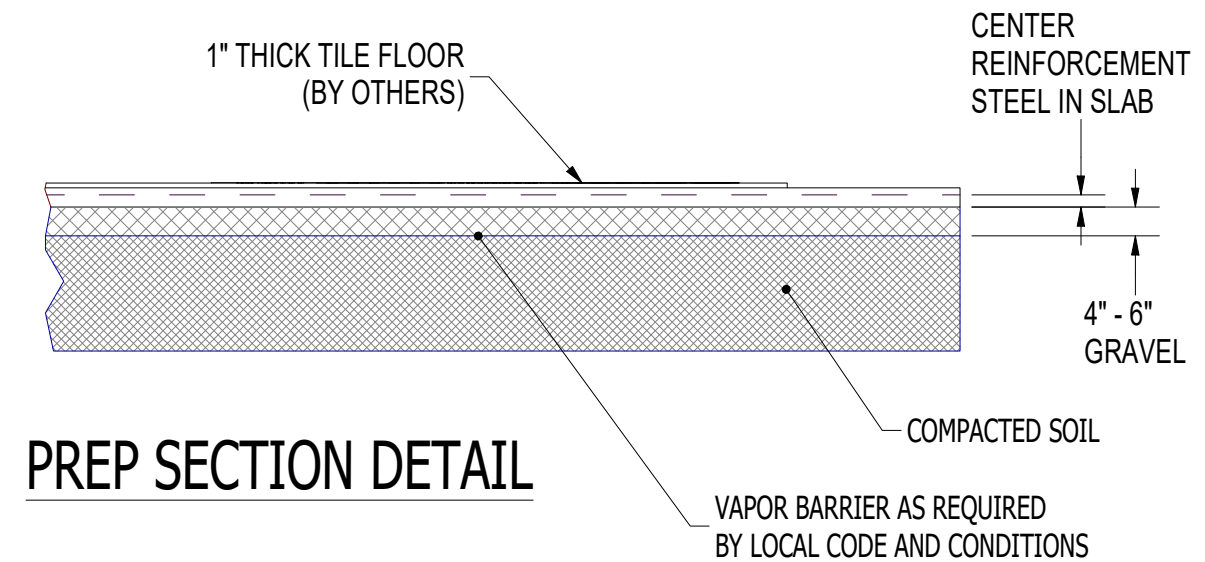
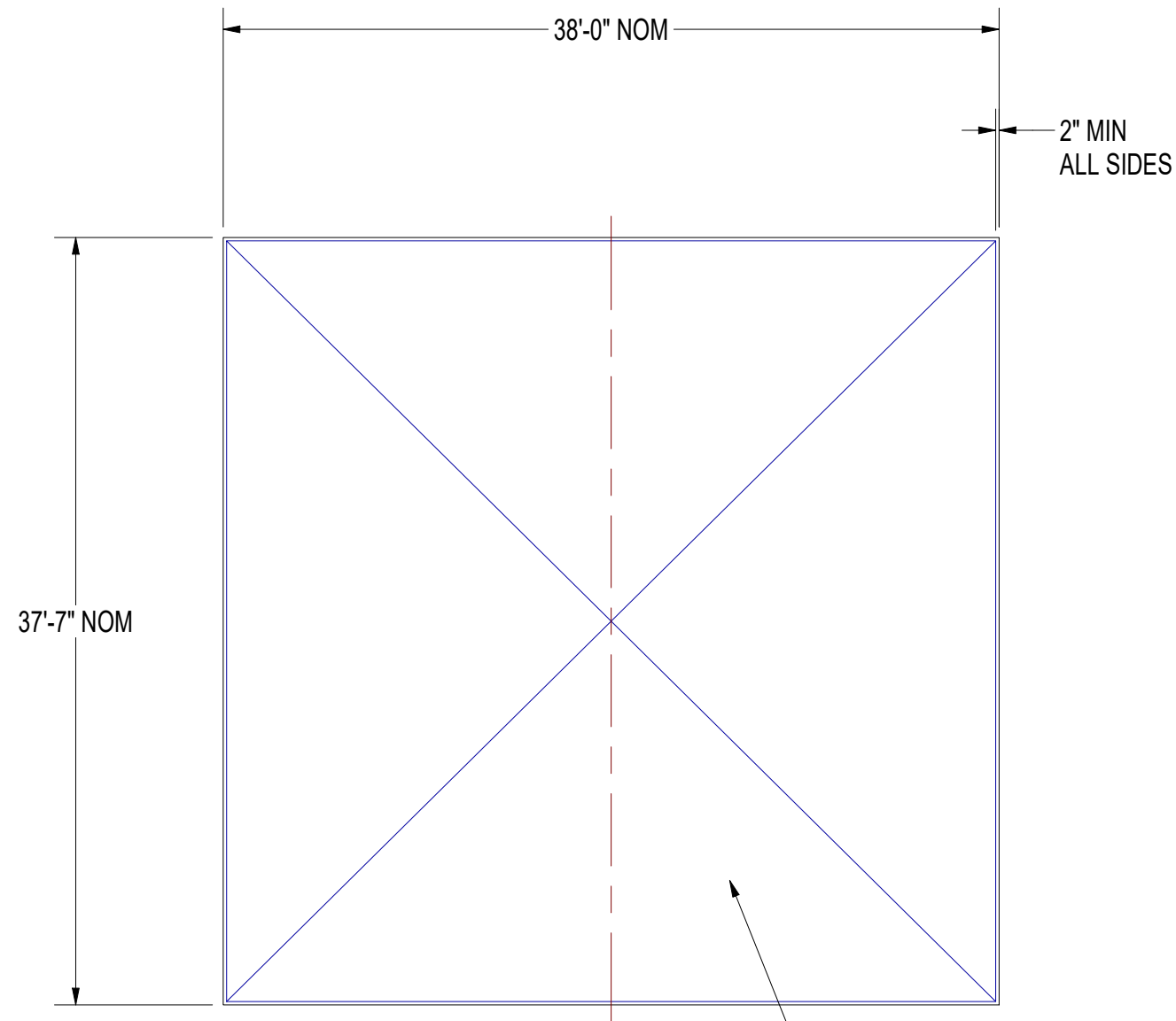
**4" MINIMUM SLAB THICKNESS**  
FOR REQUIRED ANCHOR CLEARANCE

CONTRACTION JOINTS  
APPROXIMATELY CENTERED  
(JOINTS MAY BE CUT OR SCORED)

SLAB SIZE MAY BE ADJUSTED TO PROVIDE THE BAND WIDTH SHOWN AROUND THE PERIMETER OF THE TILED COURT SURFACE.  
A NARROW 15" BAND MAY BE UTILIZED WITH A SHADE STRUCTURE. ANY SHADE STRUCTURE (BY OTHERS) SHALL HAVE ITS OWN INDEPENDENT FOUNDATIONS.

# REINFORCEMENT / PREP DETAIL

(FOR FLAT TOP SLAB / TILE FLOOR INSTALLATION)

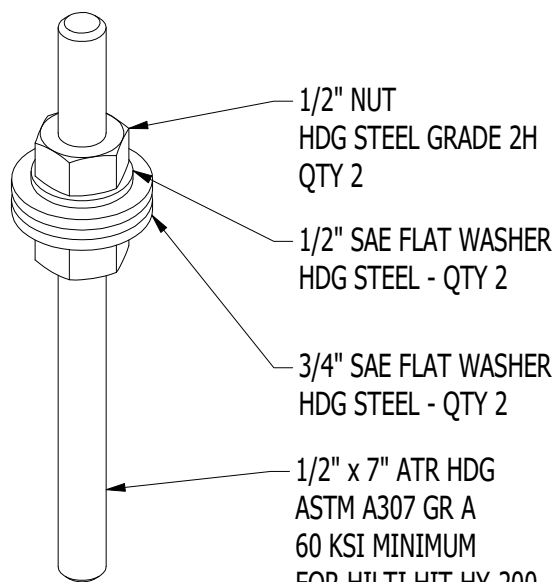
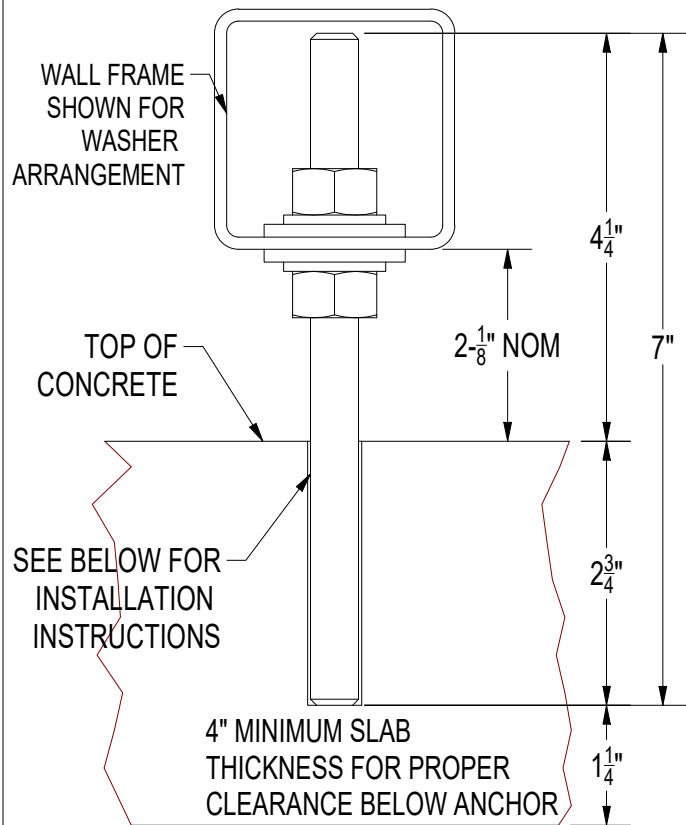


## PREP SECTION DETAIL

REINFORCING TO BE 6 X 6 X 6/6 WELDED WIRE MESH (WWM) PLACED IN THE CENTER OF THE SLAB TO EXTEND THROUGH ENTIRE SLAB. UTILIZE SUFFICIENT NUMBER OF CHAIRS TO MAINTAIN WWM POSITION. INSTALL ADDITIONAL REINFORCEMENT AS REQUIRED BY LOCAL CODE.

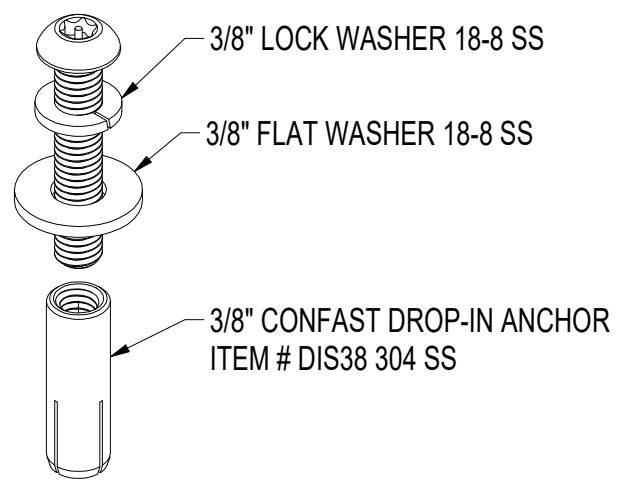
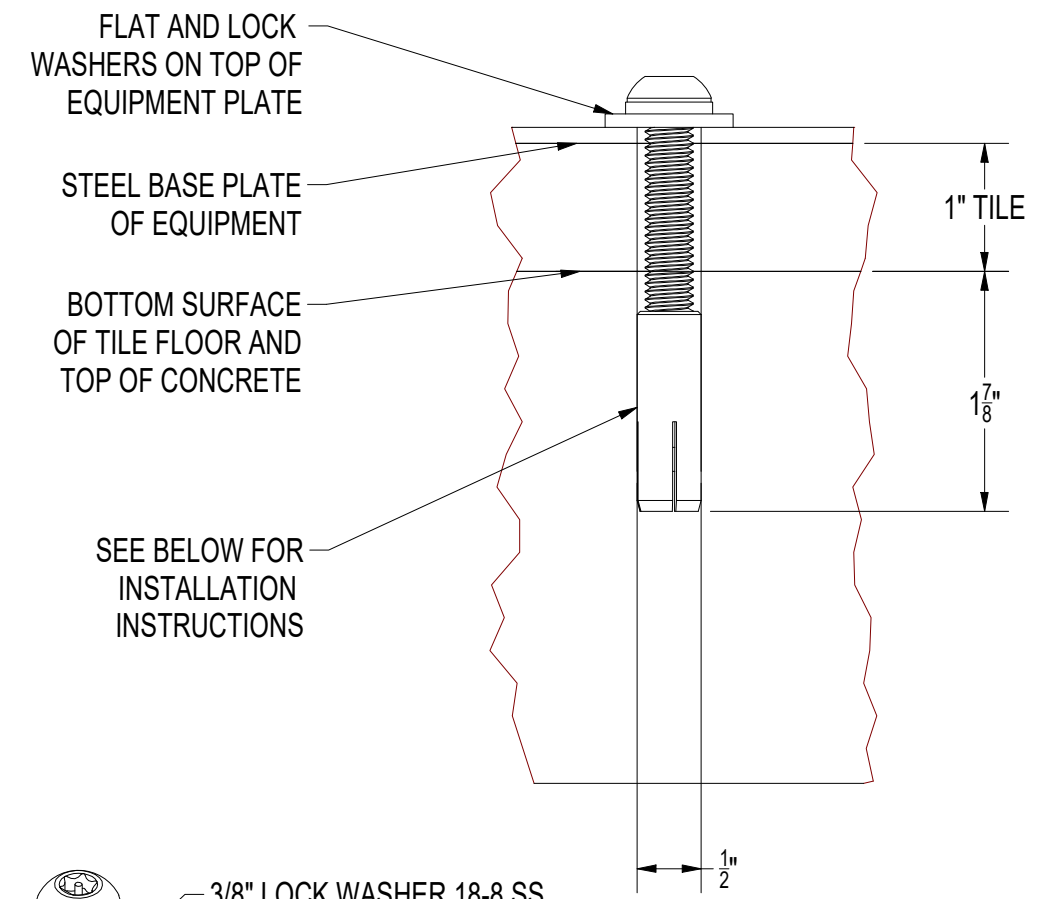
# ANCHOR DETAILS FOR TILE

APPLIES TO TILE INSTALLATION ONLY.  
REQUEST ALTERNATE DRAWING FOR POUR-IN-PLACE.  
(ALSO SEE ANCHOR NOTES ON SLAB NOTES DRAWING)



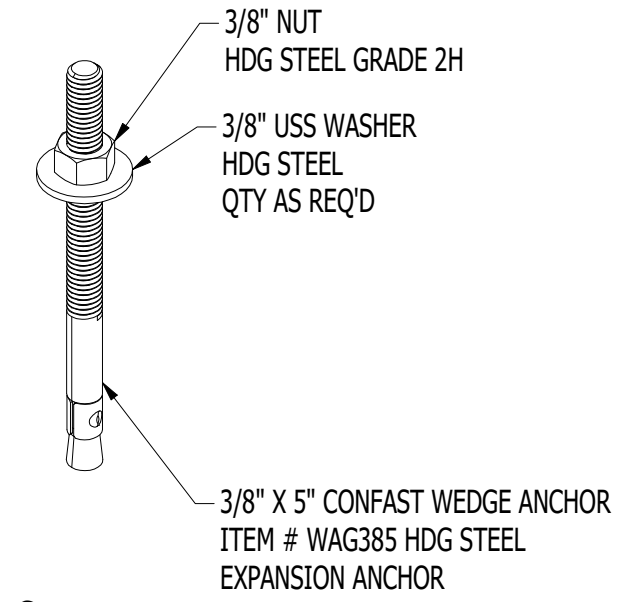
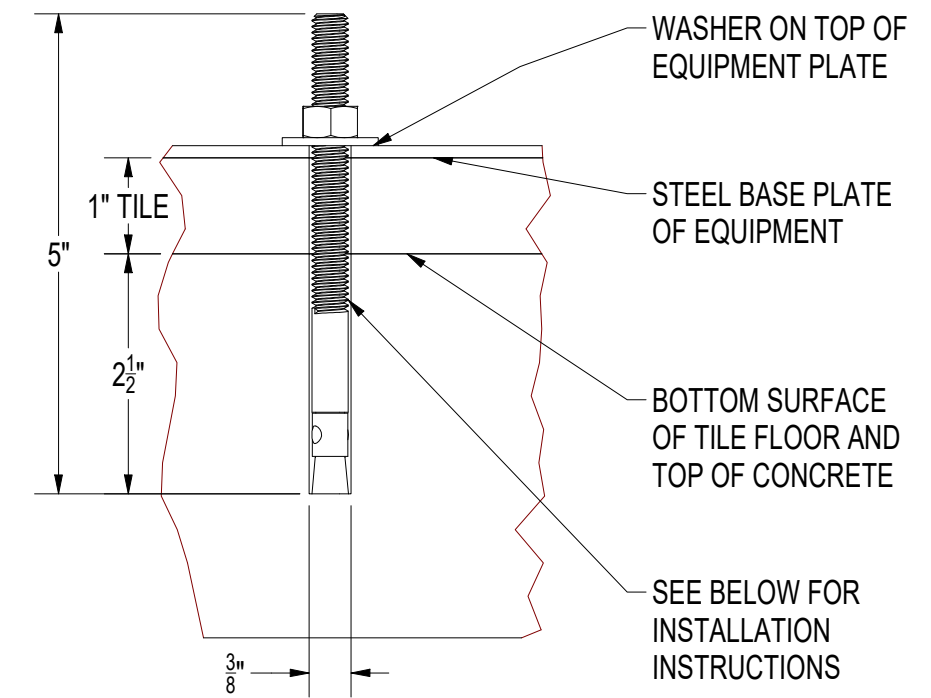
**ANCHOR A**  
**WALL ANCHOR**

DRILL 9/16" HOLE IN CONCRETE FOR 2-3/4" EMBEDMENT



DRILL 1/2" HOLE IN CONCRETE FOR 1 - 9/16" EMBEDMENT

**ANCHOR B**  
**DROP-IN ANCHOR**



DRILL 3/8" HOLE IN CONCRETE FOR 2-1/2" EMBEDMENT

**ANCHOR C**  
**MECHANICAL ANCHOR**

**ANCHOR HOLE INSTRUCTIONS**

1. DRILL HOLES FOR ANCHORS TO SPECIFIED DIAMETER AND DEPTH
2. USE COMPRESSED AIR TO REMOVE CONCRETE DUST AND DEBRIS FROM HOLES PRIOR TO ANCHOR INSTALLATION
3. REFER TO FITNESS COURT INSTALLATION INSTRUCTIONS FOR ADDITIONAL ANCHOR INSTALLATION STEPS

**ANCHOR A EPOXY NOTE:**

ANCHOR A MUST BE INSTALLED WITH THE ANCHOR EPOXY SPECIFIED OR ACCEPTABLE ALTERNATIVE. HILTI HY-200 IS RECOMMENDED. ALTERNATE EPOXY SIMPSON SET-XP IS ACCEPTABLE FOR NEW UNCRACKED CONCRETE ONLY. ALTERNATE EPOXY SIKA ANCHORFIX-2 IS ACCEPTABLE FOR NEW, UNCRACKED CONCRETE ONLY. FOLLOW EPOXY MANUFACTURER'S INSTALLATION PROCEDURES.

THIS DOCUMENT IS PROPERTY OF NFC (THE NATIONAL FITNESS CAMPAIGN). THIS DOCUMENT CONTAINS CONFIDENTIAL AND PROPRIETARY INFORMATION AND MAY ONLY BE USED BY PERMISSION FROM NFC AND FOR THE PURPOSES AUTHORIZED BY NFC. DISCLOSURE, DUPLICATION, MODIFICATION, OR OTHER USE OF THIS DOCUMENT IS NOT PERMITTED WITHOUT THE PRIOR WRITTEN PERMISSION OF NFC.



**NATIONAL FITNESS CAMPAIGN**  
SAN FRANCISCO, CA

DATE: 3/9/2022  
BY: MAXIMUS INNOVATIONS  
NAME: TILE SLAB  
REV: 7.2 PAGE 4/4